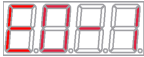










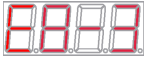









*** ANDAMIRO WARRANTS the parts from date of shipment as follows.**

- One Year Limited Warranty : Electronic Boards & Monitor

- 6 Month Limited Warranty : Moving Parts

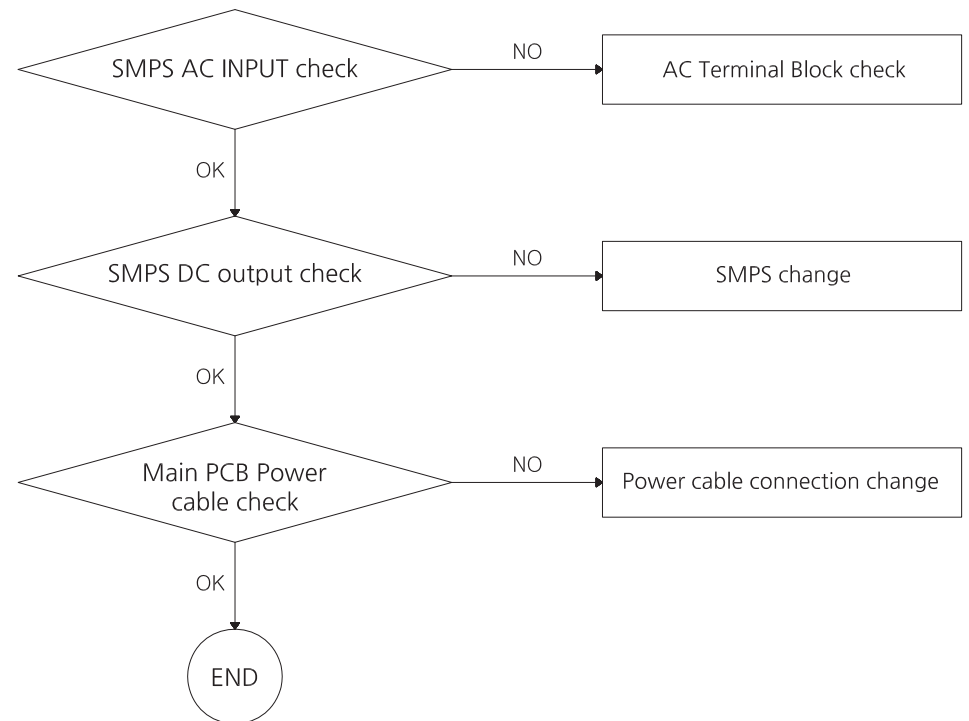
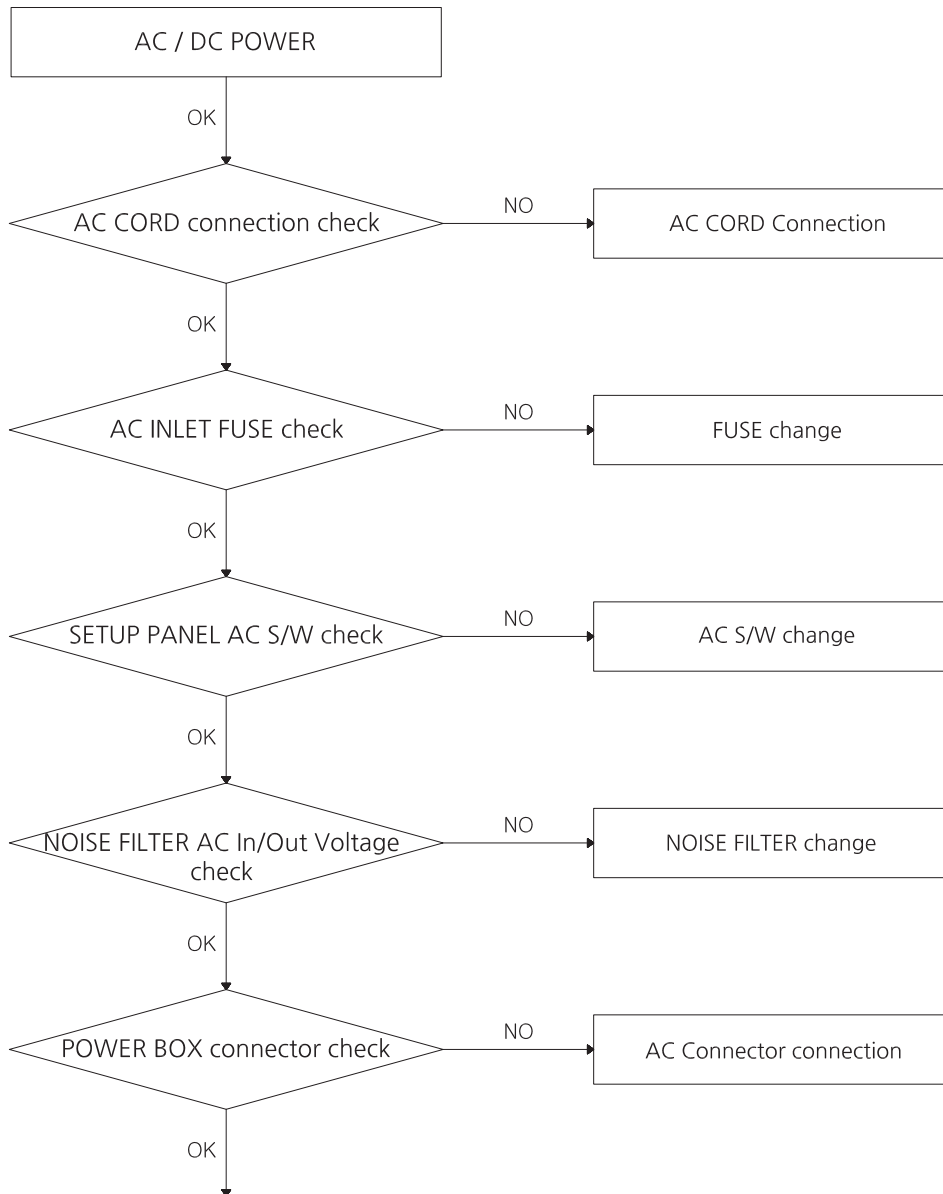
[ERROR CODE]

ERROR CODE	TICKET FND DISPLAY	ERROR TYPE	NOTE	CHECK LIST
E0-1		SETUP LCD	NO SETUP LCD RESPONSE	CHECK SETUP LCD (GAME WILL BE PLAYED NORMALLY)
E0-2		SYSTEM	FAILURE OF READING AND WRITING OF SET UP SAVED DATA MEMORY	TURN POWMER On, Off. IF IT CONTINUES, SUBSTITUTE THE MAINBOARD
E0-3			SAVED SET UP DATA PROBLEM	ENTER INTO SETUP MODE AND CHECK THE SETTING AND SAVE (IF IT CONTINUES, SUBSTITUTE THE MAINBOARD)
E0-4			SAVED SET UP DATA PROBLEM	TURN POWER On, Off. IF IT CONTINUES, SUBSTITUTE THE MAINBOARD
E1-1		COIN MECH	CONTINUOUS COIN 1 SENSOR SIGNAL	1. CHECK COIN MECH 1 2. CHECK DIP SWITCH N/O SETTING
E1-3		BILL ACCEPTOR	CONTINUOUS BILL ACCEPTOR SENSOR SIGNAL.	CHECK BILL ACCEPTOR
E6-1		BALL ELEVATOR	NO ENCODER SIGNAL CHANGE	1. CHECK MOTOR MOVEMENT 2. CHECK ENCODER SENSOR STATUS
E6-2			BALL RELEASING PROBLEM	1. CHECK THE BALL EXISTENCE 2. CHECK THE BALL RELEASING SENSOR
E6-3			NO BALL TOP SENSOR SIGNAL	1. CHECK THE BALL EXISTENCE 2. CHECK THE BALL TOP SENSOR
E8-1		GOALIN SWITCH (FROM LEFT GOALIN HOLE, 1, 2, 3, 4, 5, 6, 7) & FOUL OUT SENSOR	CONTINUOUS GOALIN HOLE NO 1 SWITCH SIGNAL	CHECK GOALIN HOLE NO 1 SWITCH
E8-2			CONTINUOUS GOALIN HOLE NO 2 SWITCH SIGNAL	CHECK GOALIN HOLE NO 2 SWITCH
E8-3			CONTINUOUS GOALIN HOLE NO 3 SWITCH SIGNAL	CHECK GOALIN HOLE NO 3 SWITCH
E8-4			CONTINUOUS GOALIN HOLE NO 4 SWITCH SIGNAL	CHECK GOALIN HOLE NO 4 SWITCH
E8-5			CONTINUOUS GOALIN HOLE NO 5 SWITCH SIGNAL	CHECK GOALIN HOLE NO 5 SWITCH
E8-6			CONTINUOUS GOAL IN HOLE NO 6 SWITCH SIGNAL	CHECK GOALIN HOLE NO 6 SWITCH
E8-7			CONTINUOUS GOAL IN HOLE NO 7 SWITCH SIGNAL	CHECK GOALIN HOLE NO 7 SWITCH
E8-8			CONTINUOUS SIGNALS OF HOMERUN INTERNAL GOALIN SWITCH	CHECK THE SWITCH OF HOMERUN GOALIN SWITCH
E8-9			CONTINUOUS SIGNALS OF INTERNAL FOUL OUT SENSOR	CHECK THE SENSOR OF INTERNAL FOUL OUT
E8-a			MORE THAN 3 TIMES TRYING TO RELEASE BALLS NO GOALIN & INTERNAL FOUL OUT SENSOR SIGNAL	1. CHECK GOALIN SWICH 2. CHECK INTERNAL FOUL OUT SENSOR 3. CHECK BALL ELEVATOR STATUS

[TROUBLESHOOTING]

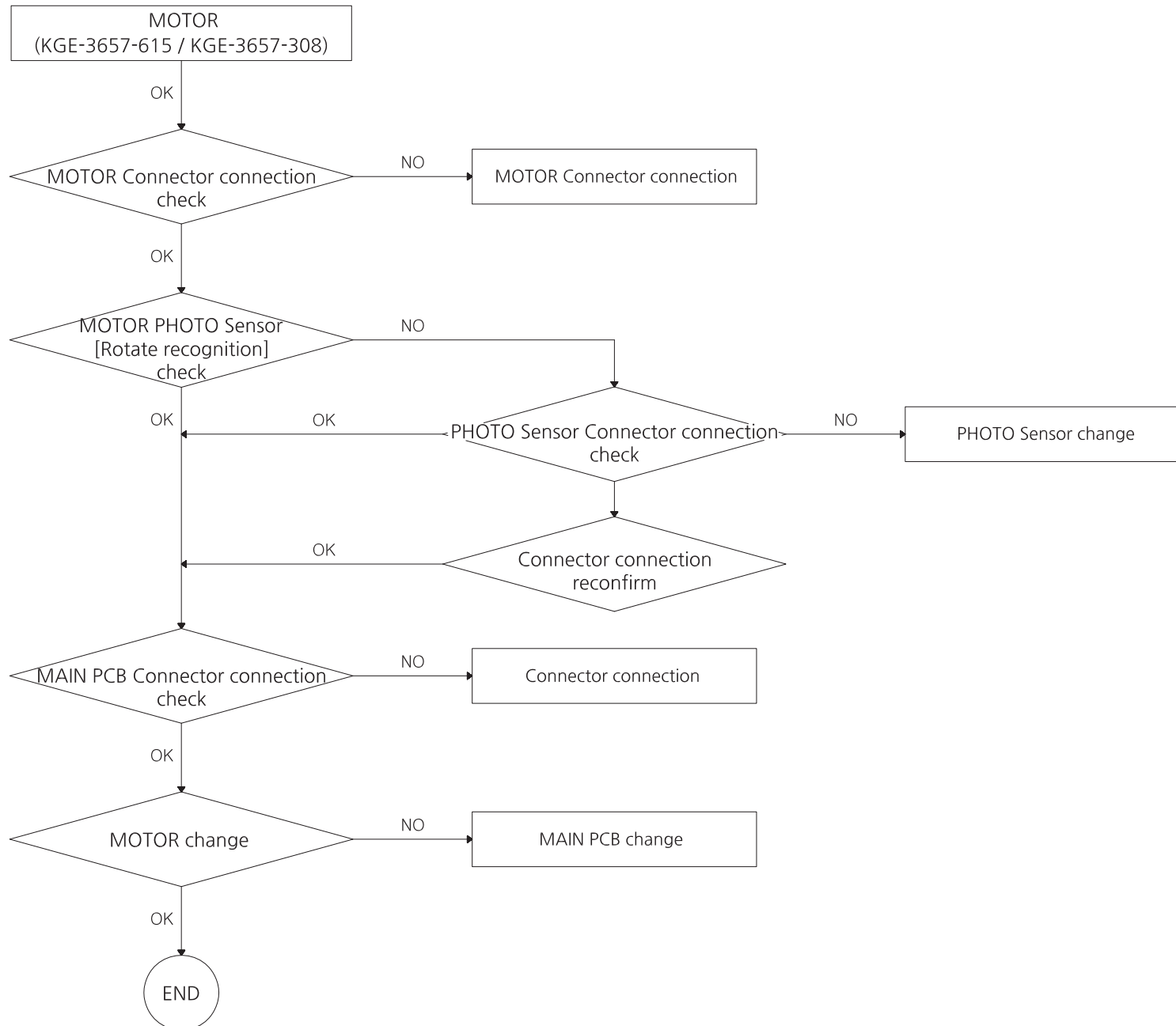
- IN CASE OF POWER FAILURE

*Common: Check the input voltage, check wiring



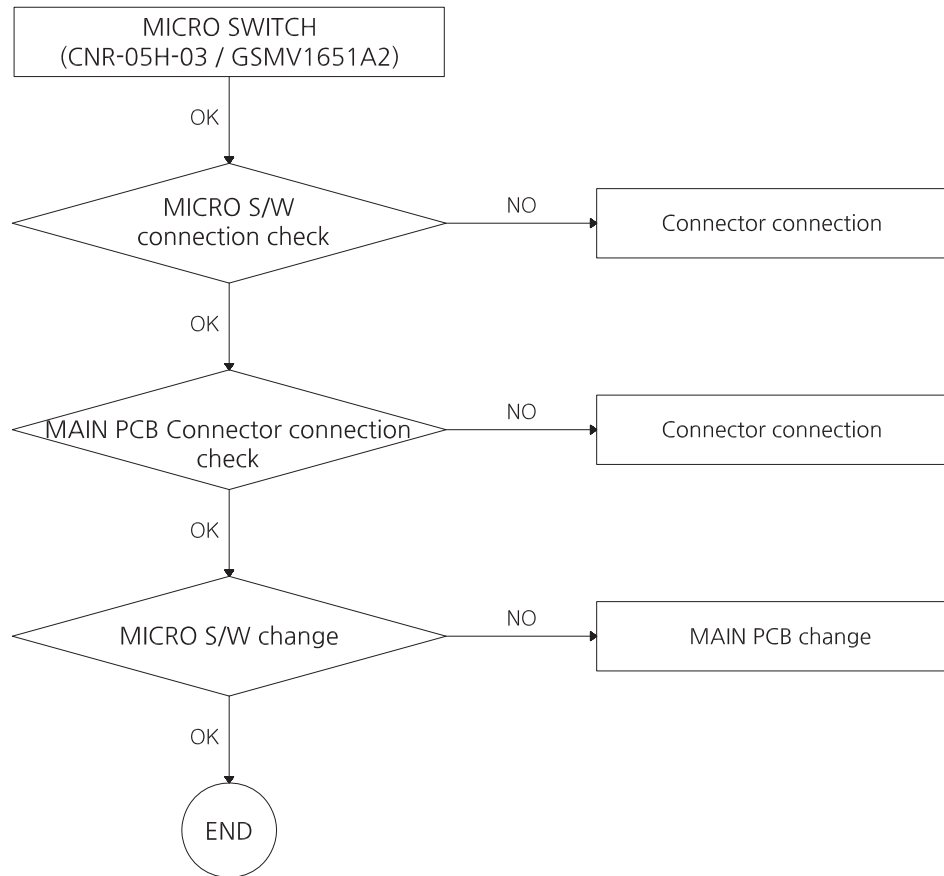
- MOTOR ERROR

*Common: Check the input voltage, check wiring



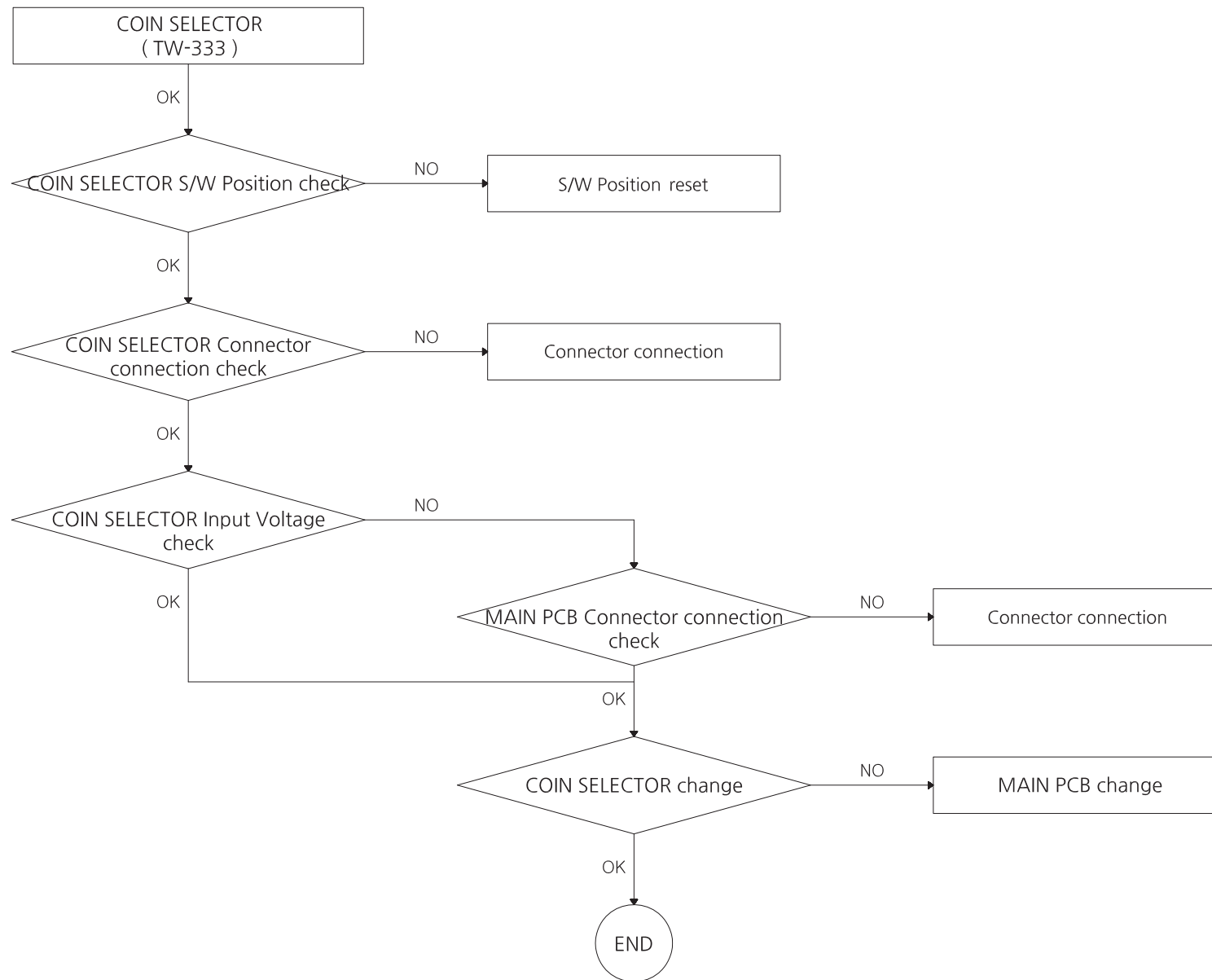
- MICRO SWITCH ERROR

*Common: Check the input voltage, check wiring



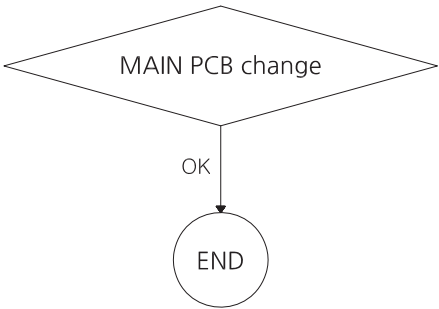
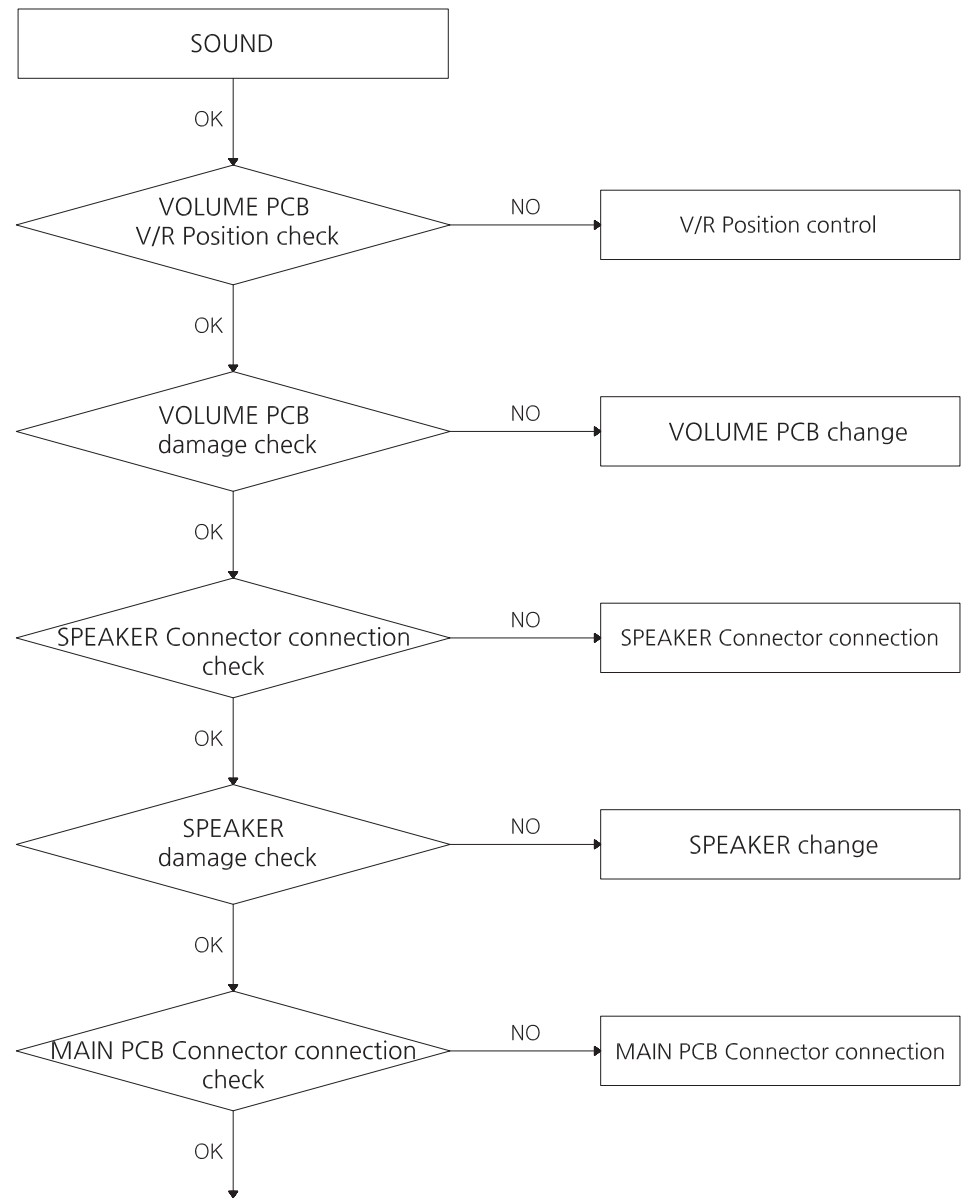
- COIN SELECTOR ERROR

*Common: Check the input voltage, check wiring



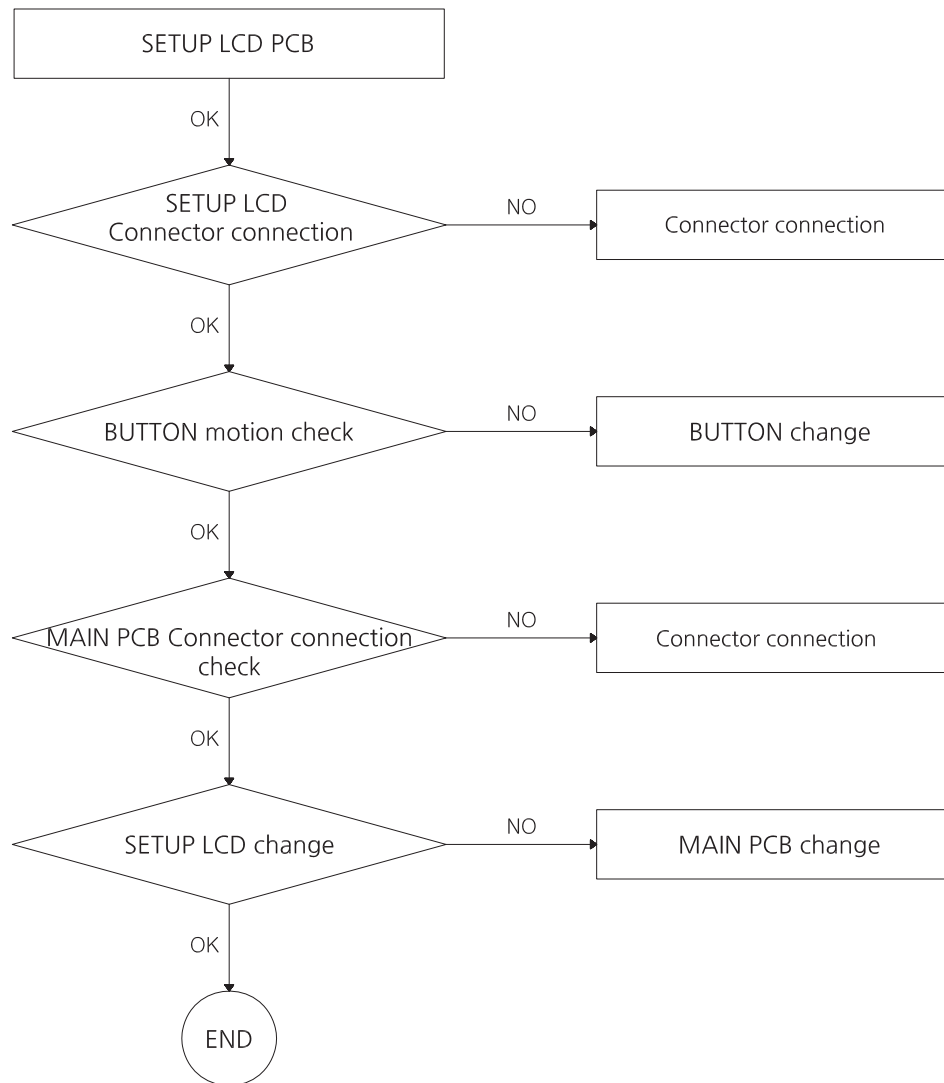
- SOUND ERROR

*Common: Check the input voltage, check wiring



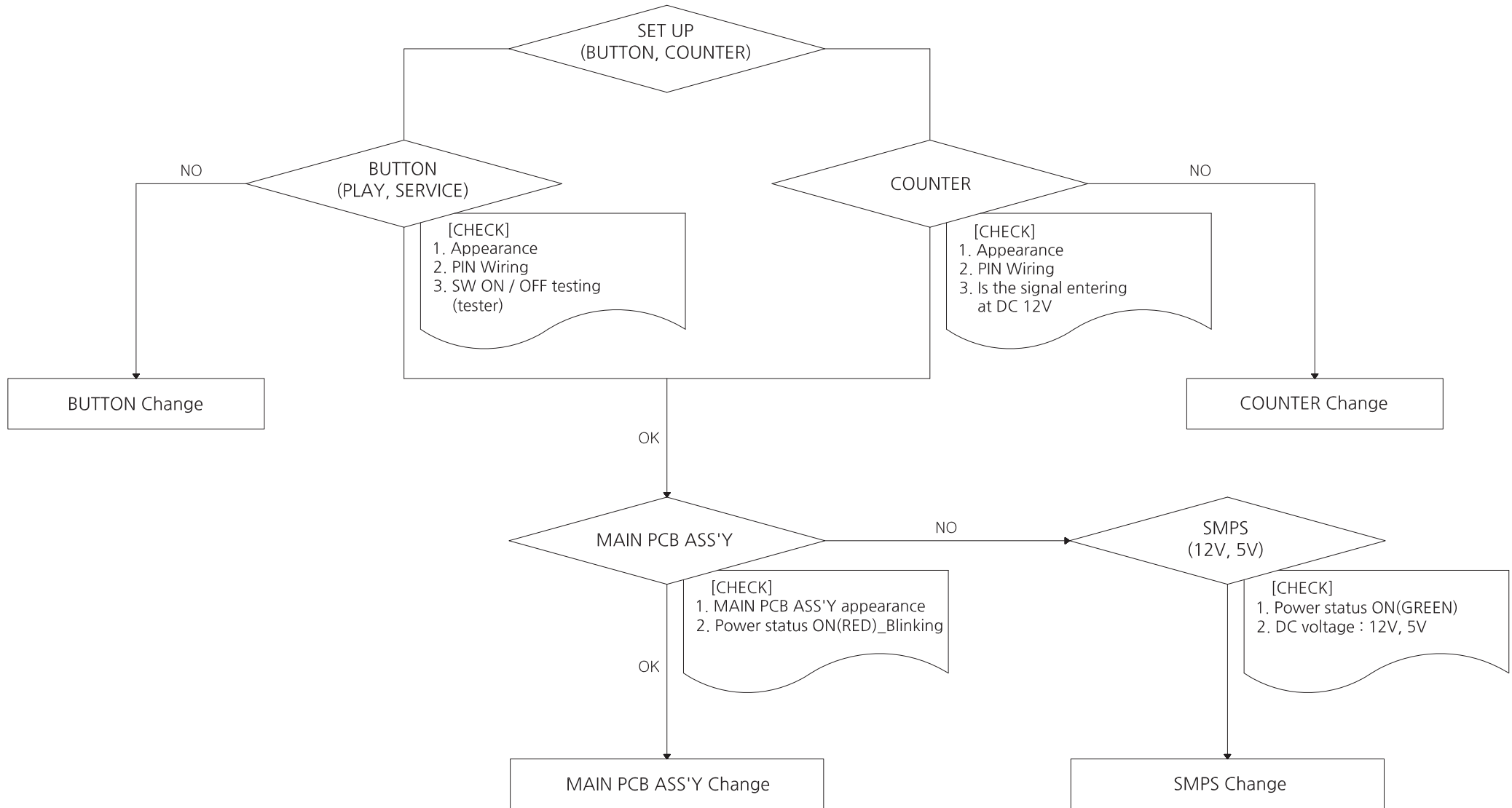
- SETUP LCD PCB ERROR

*Common: Check the input voltage, check wiring



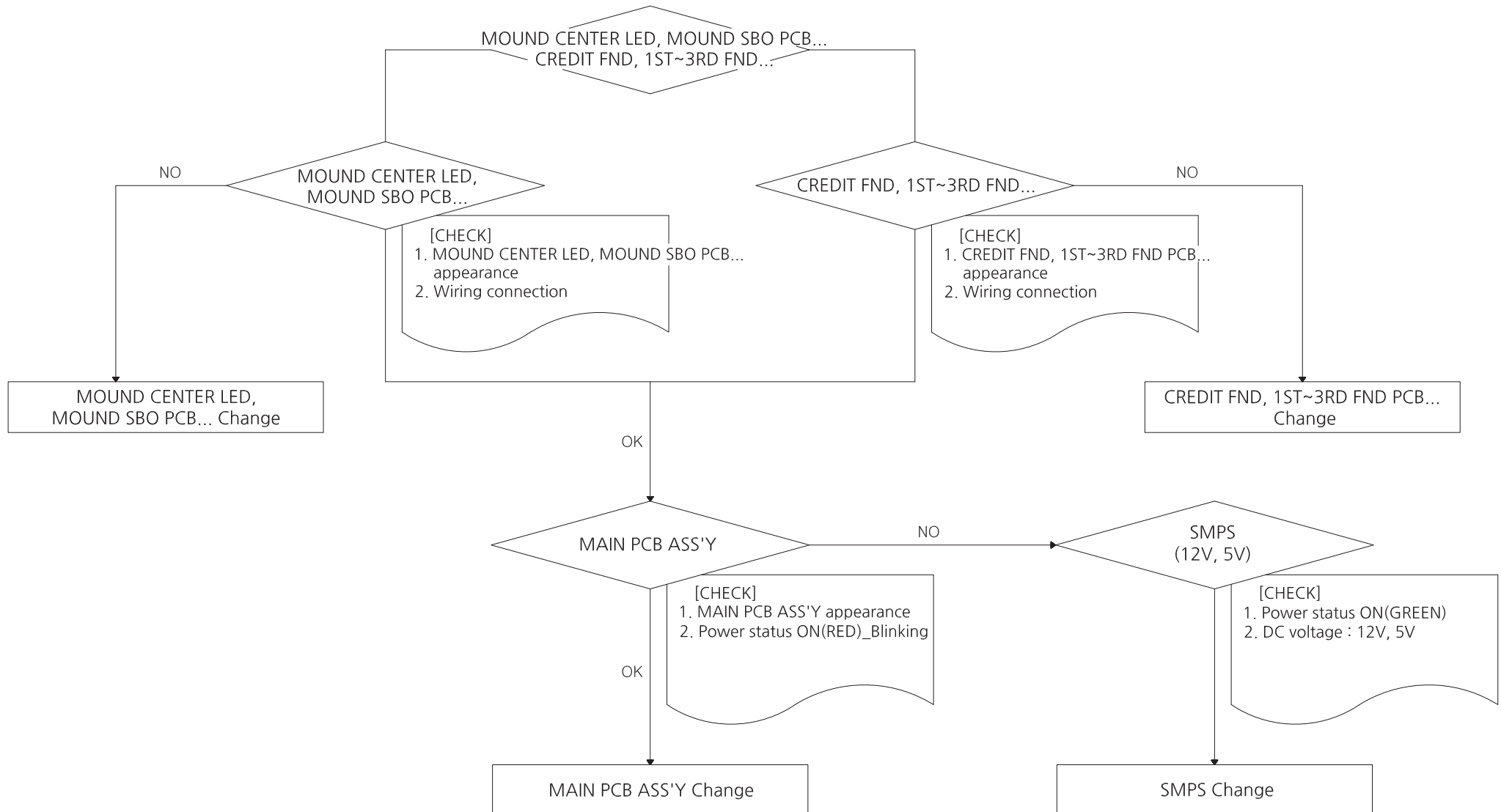
- BUTTON & COUNTER ERROR

*Common: Check the input voltage, check wiring



- MOUND CENTER LED, MOUND SBO LED, SPOT LED, HR LED / CREDIT FND, 1ST~3RD FND, WIN FND ERROR

*Common: Check the input voltage, check wiring



MEMO

MEMO